

Technical data

		CS120i	CS150i	CS250i
Output with wood pellets (with approx. 7% water)	kW	120	170	270
Output with wood chips (with approx. 25% water)	kW	90	140	240
Output with grain (with approx. 15% water)	kW	90	140	240
Minimum output at pause firing*	kW	5,5	7,5	12,5
Efficiency at nominal output	%	90,1	91,9	91,1
Efficiency at partial load**	%	89,5	88,4	88,2
Water content boiler	Ltr.	660	750	920
Flue gas outlet	mm	Ø215	Ø215	Ø250
Supply connection	-	2"	2"	2½"
Return connection	-	2"	2"	2½"
Sprinklerconnection	-	½"	½"	½"
Auger connection	mm	OK180/225	OK180/225	OK180/225
Necessary chimney draft	Pa	20	20	20
Mains connection: 3x400V+0+PE – 16A	-	---	---	---
Power consumption approx.	W	250	340	422

* Indicative minimum load at pause firing

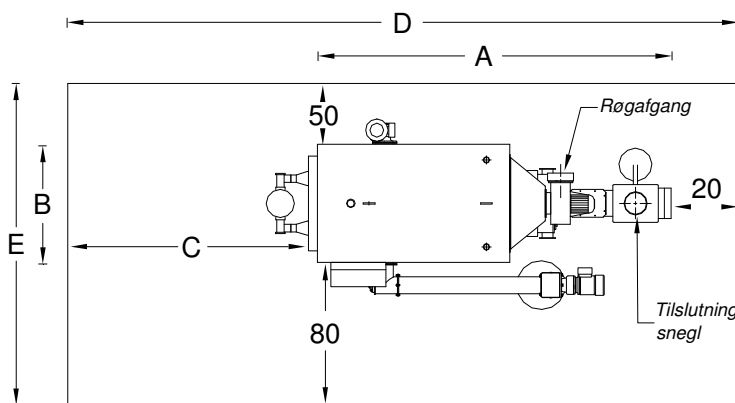
** Partial load is less than 30% of nominal load (measured at The Danish Technological Institute)

Measures

	System dimensions		Free space	Recommended dim.	
	A	B		D	E
CS120i	297	100	176	493	230
CS150i	341	106	180	541	236
CS250i	393	106	220	633	236

Measures in cm

*When using the automatic flue pipe cleaning system, or the rotary brush C and E can be reduced.



Boiler room seen from above - measures in cm.

Authorized Dealer:

Biomass Systems Supply
 A Division of Global Sales Group, LLC
 P.O. Box 1835 ~ Chico, CA 95927 USA
 For more information please contact us at 877-474-5521
 Ofc: 530-893-2444 ~ Fax: 530-893-2244
 Email: info@biomasssystemssupply.com ~ www.BiomassSystemsSupply.com

We reserve the right to make changes May 2013